

## DS-K2708X Access Controller



The access control system is divided into 2 parts: access controller (DS-K2704X) and 2 access modules (DS-K2M002X). The access controller can communicate with web client, card reader, and access modules by RS-485 interface. The access module supports the card reader's single-point fault detection and redundant processing functions to ensure the stability of the system. It is suitable for the scenarios of subways, airports, banks, large groups and other industry projects.

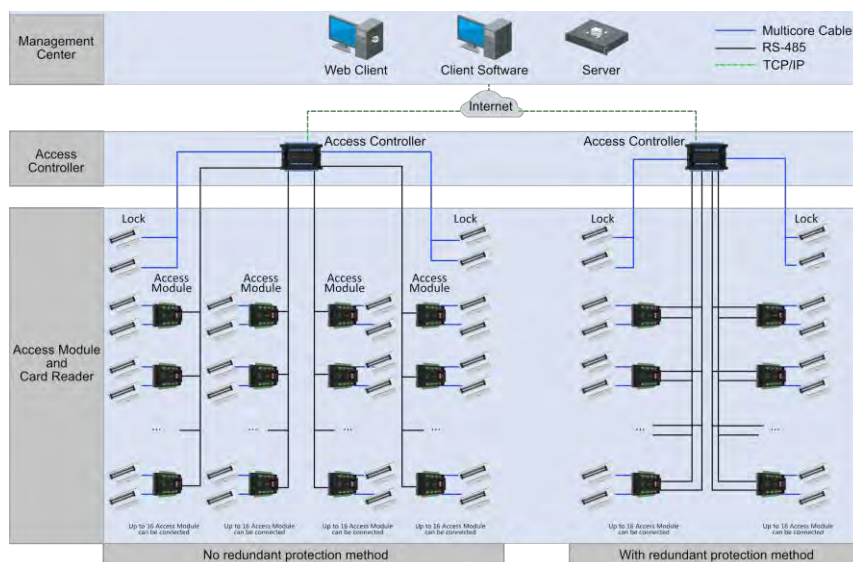
- Supports 8-door control. It is formed by 2 DS-K2M002X access modules, and one 4-doors access controller
- Access controller: downstream RS-485 redundancy wiring design to ensure communication stability. 5-ch downlink RS-485 interface supports two applications: 1. When 4-ch RS-485 communication, the 5th RS-485 can be used as a redundant application; 2. 4-ch RS-485 forms 2 groups of dual-bus loops with physical isolation. It is recommended that you do not have more than 16 access modules attached to each loop bus. Access Module: supports 8-ch RS-485 interface for card reader connecting
- Web configuration management. All configurations can be realized via web without software application
- Supports professional access control applications such as multi-door interlocking and anti-passback
- Supports backup battery access. Charging and discharging are available
- It has status indicators such as power supply, communication and operation, which is convenient for equipment health detection

## ▪ Specification

System	
Operating system	Linux
Network	
Wired network	1, 10/100/1000 Mbps self-adaptive
Interface	
Network interface	1
Lock control	8, including 4 on access controller and 4 on access modules Note: The cabinet contains 1 DS-K2704X(P) access controller and 2 DS-K2M002X access modules.
Exit button	8, including 4 on access controller and 4 on access modules Note: The cabinet contains 1 DS-K2704X(P) access controller and 2 DS-K2M002X access modules.
Door contact input	8, including 4 on access controller and 4 on access modules Note: The cabinet contains 1 DS-K2704X(P) access controller and 2 DS-K2M002X access modules.
Alarm input	16, including 8 on access controller and 8 on access modules Note: The cabinet contains 1 DS-K2704X(P) access controller and 2 DS-K2M002X access modules.
Alarm output	8, including 4 on access controller and 4 on access modules Note: The cabinet contains 1 DS-K2704X(P) access controller and 2 DS-K2M002X access modules.
TAMPER	1
RS-485	15, including 7 on access controller and 8 on access modules 7 on access controller: 2 for card reader, 5 for access modules (4 for communication, each interface can connect up to 16 access modules; 1 for redundancy) 8 on access modules: 4 for card reader, 4 for access controller
Wiegand	8, including 4 on access controller and 4 on access modules Note: The cabinet contains 1 DS-K2704X(P) access controller and 2 DS-K2M002X access modules.
USB	1, USB 2.0
Fire interface	1
Capacity	
User capacity	100,000
Fingerprint capacity	10,000
Card capacity	200,000
Event capacity	600,000
Linked door capacity	8, including 4 on access controller and 4 on access modules
Linked card reader capacity	16 RS-485 card readers (OSDP protocol) and 8 Wiegand card readers; 8 RS-485 card readers on the access controller and 8 on access modules (4 for each); 4 Wiegand card readers on the access controller and 2 on access modules
Authentication	
Fingerprint recognition duration	< 1 s

General	
Indicator	DS-K2704X(P): 12 indicators, 1 for indicating power status, 1 for running status, 1 for wired network status, 5 for RS-485 status, and 4 for door status DS-K2M002X: 6 indicators, 1 for indicating power status, 1 for running status, 2 for RS-485 status, and 2 for door status
Battery	Charge and discharge
Power supply	100 VAC to 240 VAC
Power consumption	≤ 200 W
Working temperature	-10 °C to 55 °C (14 °F to 131 °F)
Working humidity	0% to 90% (No condensing)
Installation	Wall mounting
Language	English, Thai, Traditional Chinese, Indonesian, Vietnamese, Arabic, Spanish (Europe), Spanish (South America), Italian, French, Dutch, Russian, Ukrainian, Portuguese (Europe), Portuguese (Brazil), Serbian, Croatian, Bulgarian, German, Greek, Romanian
Function	
Configuration via Web browser	Support
Multi-factor authentication	Support
First person in	Support
Anti-passback	Support 32 routes (64 card readers each)
Multi-door interlocking	Support 32 groups (32 doors each)

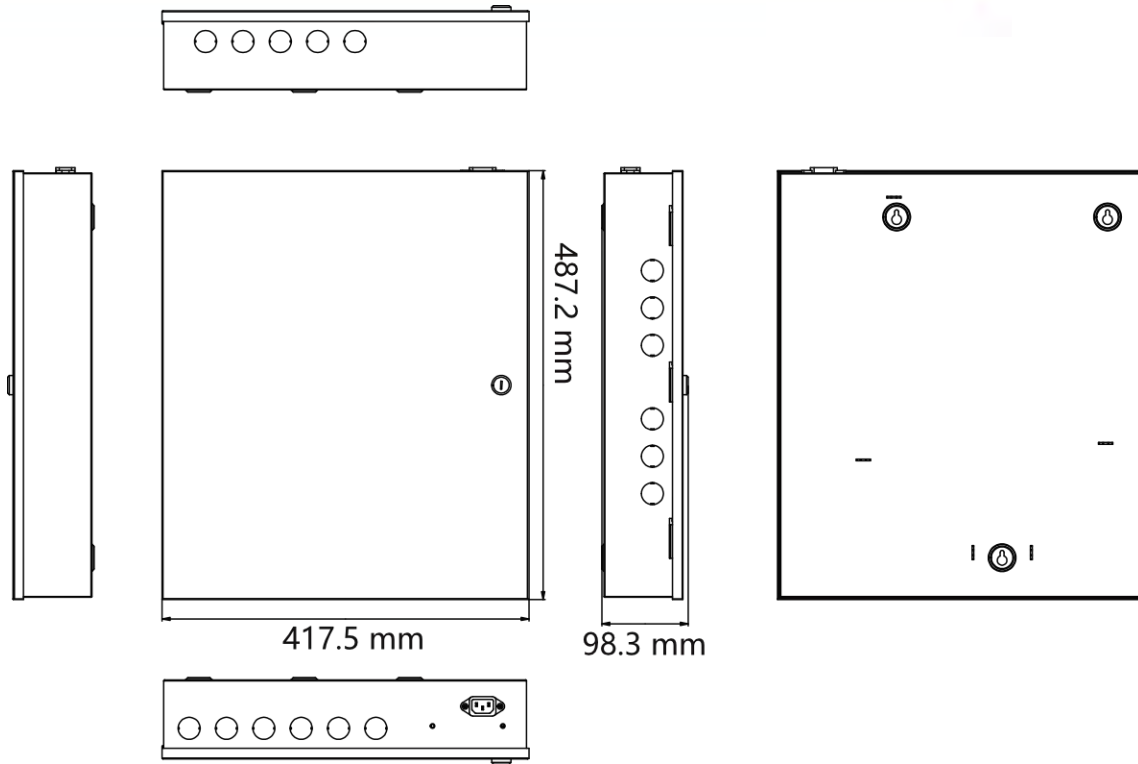
## ▪ Typical Application



## ▪ Available Model

DS-K2708X

## ▪ Dimension



**Headquarters**

No.555 Qianmo Road, Binjiang District,  
Hangzhou 310051, China  
T +86-571-8807-5998  
www.hikvision.com



Follow us on social media to get the latest product and solution information.

