

The Ava logo is displayed in white, stylized, uppercase letters on a purple rounded square background in the top left corner of the image.

AVA

A dark, rounded rectangular overlay is positioned over the license plate of a blue car. Inside this overlay, the license plate number 'ABC 2345' is written in white, bold, sans-serif font.

ABC 2345

The background of the entire advertisement is a photograph of a parking garage. A blue sedan is parked in the foreground, viewed from the rear. A semi-transparent purple trapezoidal shape is overlaid on the scene, originating from a camera lens in the upper right and extending towards the car. The license plate of the car is visible and reads 'NEW YORK ABC-2345'.

Ava Aware License Plate Recognition

Intelligent, automatic license plate detection for your business

Ava Aware License Plate Recognition (LPR) helps organizations leverage their existing security infrastructure to capture and track license plate data in real time. Say goodbye to dedicated license plate recognition cameras, expensive licensing, and lack of control. With Ava Aware LPR, you can get rules-based alerts for license plates of interest, speed up post-event investigations, and optimize operations based on vehicle analytics and business intelligence. All this, and you only need one camera to do it.

Why do you need it?



Secure your parking lots, garages, and property



Faster vehicle flow through your entrances and exits



Monitor and search for incoming and outgoing vehicles in real time



More data means more informed decision making



Conduct more accurate post-event investigations



Incredibly accurate with the ability to pick up data a human may not detect

How it works?

1. Use Ava Aware LPR with your existing security cameras, Ava Bullet, or Ava Dome
2. As traffic enters your property, Ava Aware LPR scans each vehicle and creates an event based on rules, categorizing the license plate into a searchable query
3. Events are identified on your Ava Aware dashboard
4. Access events allow you to automate gated entry by approving certain license plates to your lot or garage
5. Access any LPR events or alerts from your phone or computer

Enhance your vehicle insights with the powerful Ava Aware LPR solution



Intuitive and reliable

Once your camera is installed in a suitable location for monitoring vehicular traffic, you only need a valid dedicated license to enable LPR on the device. Configuration takes only a few minutes, and you can immediately visualize information in the Aware interface. Simplify administration with comprehensive, easy-to-manage lists of license plates.



Open and scalable

Get the flexibility that you need. Integrate and extend LPR capabilities to the existing cameras in your deployment, both third-party devices and Ava Cameras. You will no longer need specialized devices or LPR camera bundles to cover your needs, only an LPR license for each security camera.



Proactive alerts

Use rule-based detections to open the entry barrier for vehicles that are registered on a predetermined list. If needed, the system triggers alarms when vehicles on a blacklist are detected.



Optimized operations

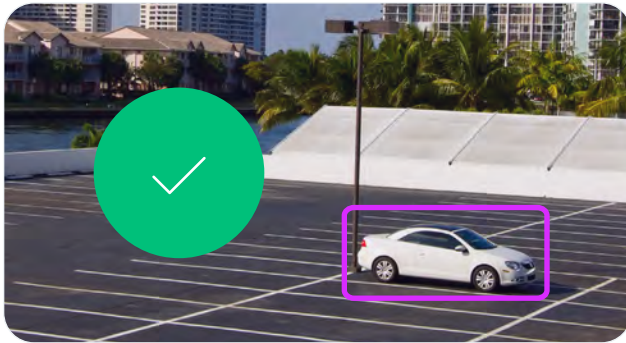
Gain insight into the vehicles entering and exiting your premises. Monitor the traffic flow and time of entry/exit, identify vehicles of interest, collect fines on repeat offenders, and increase revenue with the same or fewer resources.



Improved searching

Identify parking offenders, enforce compliance, and speed up investigations by accurately searching for all historical detections of license plates of interest. Use vehicle similarity searching for license plate data to get more accurate results.

Use cases for cameras with LPR capabilities



Parking lots

Monitor vehicles entering and leaving your parking lot. Set alerts to notify you of any unapproved license plates.



Gated entry

Automate your gated entries, allowing LPR to recognize pre-approved vehicles and keep track of traffic.



Drive-throughs

Protect your drive-through from vandalism and incidents by tracking vehicles and collecting data.

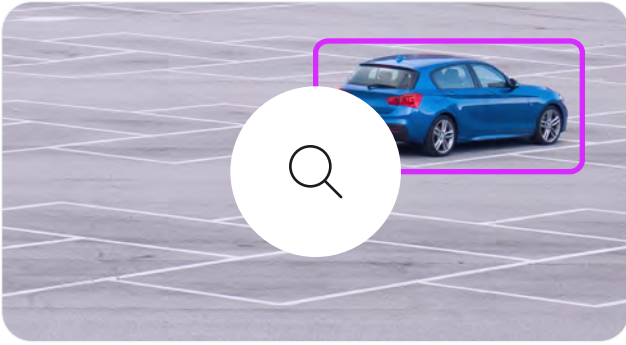
Why Ava



No rip and replace

Ava Aware LPR can layer onto your existing dome or bullet cameras, so you don't need to change your security system.

Don't have cameras or need to upgrade?
Ask about Ava's cameras.



Logistics operations

Manage entry permissions, track arrival and departure times, locate vehicles on site and speed up investigations in case of lost or damaged goods.



Decrease traffic jams

Have Ava Aware LPR scan and permit entry or exit to vehicles faster than a staffed security booth can.

Why Ava



Always ahead of the curve

Ava Aware LPR is software driven, so updates are automatic—you'll always have the most-recent firmware and features.

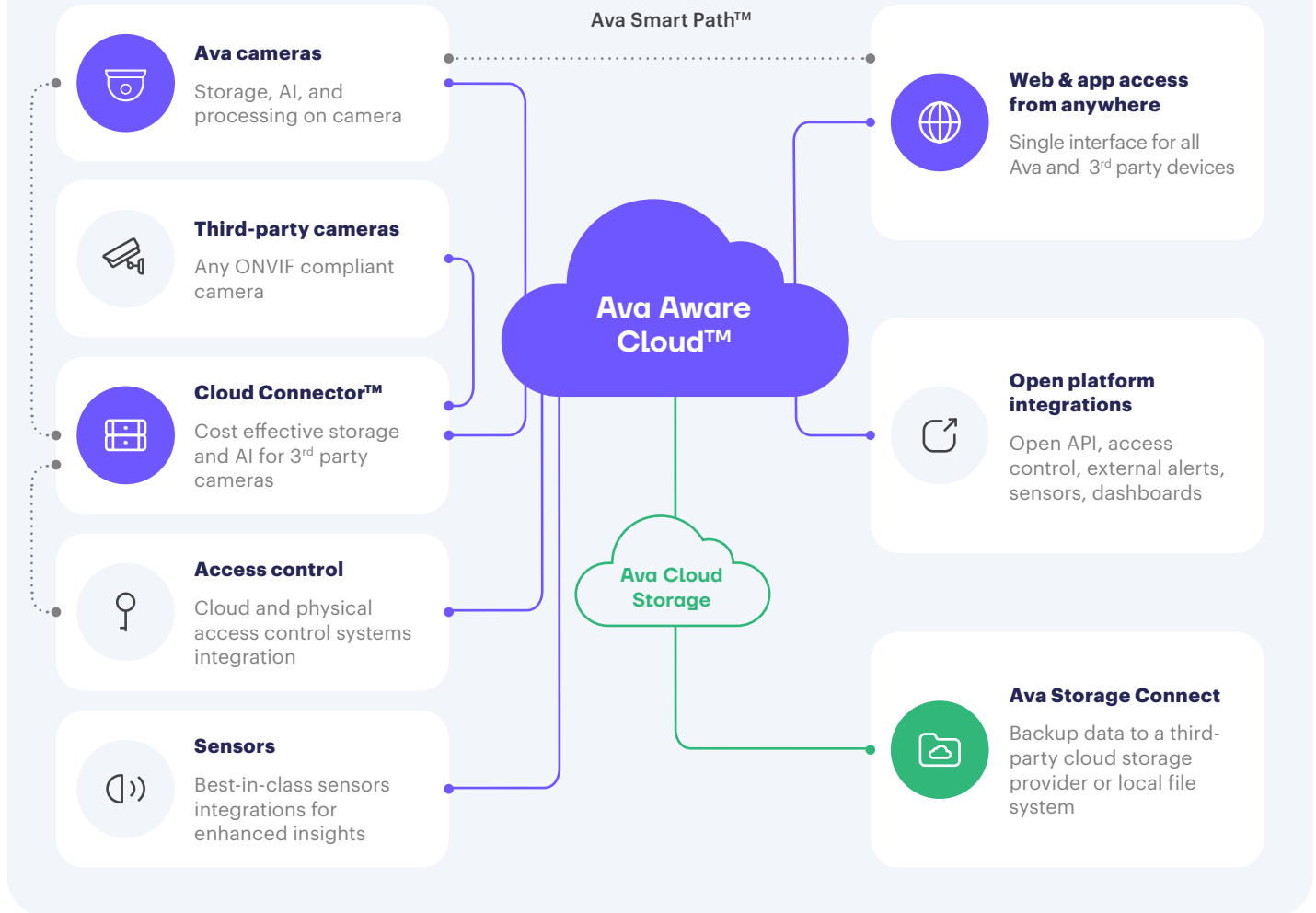
Why Ava



Open

The possibilities are endless with Ava. Use LPR to automate your security and entrances with intuitive machine learning and rule-set incorporation across many different systems.

How it works – the Ava Cloud Video Security architecture



Frequently asked questions, answered

1. How can I activate LPR on my security cameras?

Ava Aware LPR is a licensed feature. Once licensed, set-up takes minutes. Reach out to your Ava Partner or Sales representative for more information.

2. Which security cameras are compatible with the Ava Aware LPR solution?

Ava Aware LPR requires the use of a bullet or dome-type camera and cannot be configured on panoramic, 360°, or fisheye cameras. Find out how a security camera like [Ava Bullet](#) or [Ava Dome](#) can fit your needs.

3. Which geographical regions are supported?

We support license plate detection for all regions.

4. How can I ensure compliance with local regulations?

Depending on the geographical location of the cameras and systems carrying out LPR, the information extracted may need to be classified as Personally Identifiable Information (PII) or Personal Data. Ensure that any use and storage of data extracted using Ava Aware LPR complies with local laws and regulations, and adhere to the requirements for signage and notifications for local data protection.



Ava Security is a global technology company with offices in the UK, Norway, and the USA. It was founded in 2016 to create a better, smarter way to deliver security. Ava protects people, property, and data anywhere. Innovative companies worldwide use Ava Reveal™ for human-centric data loss protection and Ava Aware Cloud™ for video security and analytics.

To learn more about Ava's smart solutions and how you can enjoy proactive security, visit our website or schedule a demo with a member of our sales team at sales@avasecurity.com.

www.avasecurity.com