

DS-1696ZJ-X-AC(OS)

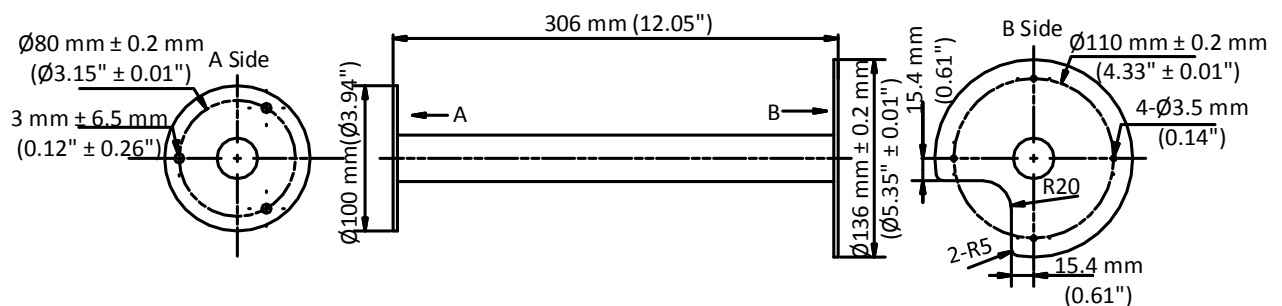
Pendant Mount



Feature

- Stainless steel with anti-corrosion surface spray treatment (excluding hoops)
- Applies to anti-corrosion bullet camera

Dimension



Available Model

DS-1696ZJ-X-AC(OS)

Parameter

Model	DS-1696ZJ-X-AC(OS)
Parameters	Pendant Mount
Appearance	Silver moon grey
Material	SUS316L Stainless steel
Dimension	136 mm × 136 mm × 306 mm (5.35" × 5.35" × 12.05")
Weight	1.1 kg (2.42 lb.)

Note

- The mount should be installed on the flat surface.
- The wall must be capable of supporting at least 3 times as much as the total weight of the camera, and the mount.
- The mount's maximum load capacity is 10 kg (22.05 lb.).