

ELARA™ FC-SERIES ID

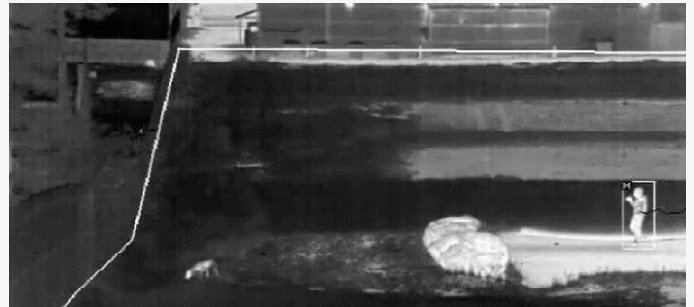
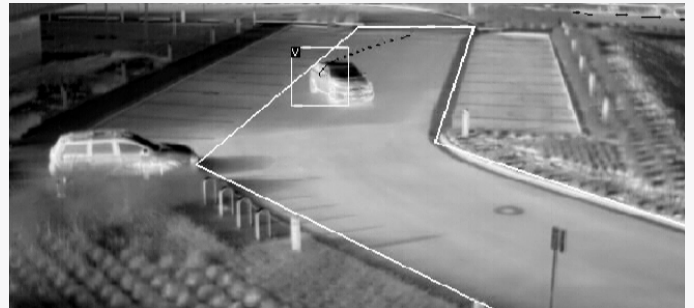
Thermal Analytics Camera



The Elara FC-Series ID combines best-in-class thermal image detail and high-performance edge perimeter analytics in a single device that delivers optimal intrusion detection in challenging environments and extreme conditions.

Elara FC-Series ID cameras feature on-board video analytics optimized for FLIR's thermal sensors. Easy to set up and capable of classifying human or vehicular intrusions,

Elara FC-Series ID cameras provide reliable detection with low false alarm rates, all without human intervention.



RELIABLE ONBOARD ANALYTICS

Accurately classify humans and vehicles

- Auto calibration for depth setup for a simple and reliable configuration.
- No additional measurement tools are needed, requiring only a single installer on site
- Allows analytics in corridor mode, reducing the number of cameras and improving the total cost of ownership
- Target hand-off to PTZ camera auto-tracking

INDUSTRY-LEADING IMAGE QUALITY

Crisp, clean imagery for unmatched video analytics performance and reliability

- Superior image quality in low-contrast conditions
- FLIR's custom AGCs provide images with extremely high contrast
- Dynamic Detail Enhancement (DDE) creates sharp edges and contrast that improve analytics performance

HIGH-PERFORMANCE LENSES

Wide range of lenses for optimal detection ranges in all conditions

- Choose from 17 high-performance lenses suitable for any perimeter or open area, including QVGA from 4° to 69° fields of view and VGA from 8° to 90° fields of view
- High performance optics deliver clear thermal video

SPECIFICATIONS

	Elara FC 3xx ID-Series	Elara FC 6xx ID-Series	Environmental			
Image			Environmental			
Array Format (NTSC)	320 × 240	640 × 480	IP Rating (Dust & Water Ingress)	IP66 & IP67		
Detector Type	Long-Life, Uncooled VOx Microbolometer		Operating Temperature Range	-50°C to 70°C/-58°F to 158°F (Continuous Operation) -40°C to 70°C /-40°F to 158°F (Cold Start)		
Spectral Range	7.5 µm to 13.5 µm		Storage Temperature Range	-50°C to 85°C/-58°F to 185°F		
Effective Resolution	76,800 pixels	307,200 pixels	Humidity	0-95% relative humidity		
Pixel Pitch	Effective 34 µm (FC-344,332& 369) 17 µm (all other models)	17 µm	Shock	MIL-STD-810G "Transportation"		
Thermal Frame Rate	NTSC: 30 Hz - PAL: 25 Hz / 8.3 Hz		Vibe	IEC 60068-2-27		
E-Zoom	4x continuous E-Zoom		Vandalism	IK10 (except windows)		
Focus	Athermalized, focus-free		De-Icing / Anti-Icing	MIL-STD-810 F, Method 521.2 - 6 mm ice, 120 minutes with POE+, 4 mm ice with POE af FC-304, FC-305, FC-610 & FC-608 with Cold Weather kit		
Sensitivity	<35 mK for F# 1.0 optics		Warranty & Regulatory			
Video			Approvals	CE: EN55032 Class A; FCC 47 CFR Part 15, Subpart B, Class A (within CISPR 22:2008 Class A limits)		
Composite Video NTSC or PAL	Hybrid system with IP & analog video, Dynamic NTSC or PAL settings		Certifications	IEC 60068-2-1:2007; IEC 60068-2-2:2007; ISTA-1A (Handling)		
Analog Video Output Composite	1Vp-p (PAL or NTSC), 1 x BNC 75 Ω		Compliance	RoHS Directive 2011/65/EU; WEEE 2012/19/EU		
Video Compression	Two independent channels of H.264 (Restricted VBR and CBR,10kbps-4Mbps, MPEG4, and MJPEG)		Warranty	Camera: 3 Years Sensor: 10 Years		
Streaming Resolution	D1: 720 × 576, 4CIF: 704 × 576, Native: 640 × 512, Q-Native: 320 × 256, CIF: 352 × 288, QCIF: 176 × 144		Optics			
Thermal AGC Modes Features	Brightness, Contrast, Sharpness, Grey Shade Compression, Gamma, Smart Screen Balance		Model	FOV	F#	Focal Length
Thermal AGC Region of Interest (ROI)	Default, Presets and User definable to insure optimal image quality on subjects of interest		FC-369 ID	69° × 56°	F1.4	9 mm
Analytics Management	Web-based configuration and management. Masking of analytic detection areas, adjustable sensitivity, automatic responses, remote I/O control		FC-344 ID	44° × 36°	F1.0	13 mm
Analytics Features	Region Entrance/Intrusion Detection, Crossover/Fence Trespassing;		FC-332 ID	32° × 26°	F1.0	19 mm
Image Uniformity Optimization	Automatic Flat Field Correction (FFC); Thermal and Temporal Triggers		FC-324 ID	24° × 18°	F1.0	13 mm
SD Card Snapshot Capture	Support for 32 GB SD Card (sold separately)		FC-317 ID	17° × 13°	F1.0	19 mm
System Integration			FC-313 ID	13° × 10°	F1.1	25 mm
Ethernet	10/100 Mbps		FC-309 ID	9.2° × 7.0°	F1.1	35 mm
External Analytics Compatible	Yes		FC-305 ID	5.4° × 4.1°	F1.25	60 mm
Control Input/Output	1x Dry Contact In; 1x Relay Out (rated load 0.025 A@ 5 VDC)		FC-304 ID	4.3° × 3.3°	F1.1	75 mm
Network APIs	FLIR SDK, FLIR CGI, ONVIF Profile S		FC-690 ID	90° × 69°	F1.2	7.5 mm
Network			FC-669 ID	69° × 56°	F1.4	9 mm
Supported Protocols	IPv4, HTTP, Bonjour, UPnP, DNS, NTP, RTCP, TCP, UDP, IGMP, IGMP, DHCP, ARP, FTP, RTP/RTSP, Unicast/Multicast, TCP/IP, HTTP, IEEE 802.1X, SNMP		FC-644 ID	44° × 36°	F1.0	13 mm
General			FC-632 ID	32° × 26°	F1.0	19 mm
Weight With Sunshield	7.5/9/13/19/25/35 mm 1.8 kg (4 lb) - 60 mm 2.0 kg (4.5 lb) - 75 mm 2.2 kg (4.75 lb)		FC-625 ID	25° × 20°	F1.1	25 mm
Weight Without Sunshield	7.5/9/13/19/25/35 mm 2.2 kg (4.75 lb) - 60 mm 2.4 kg (5.25 lb) - 75 mm 2.5 kg (5.5 lb)		FC-617 ID	17° × 14°	F1.1	35 mm
Dimensions (L, W, H)	Without sunshield: 259 × 114 × 106 mm/10.2" × 4.5" × 4.2" With sunshield: 282 × 129 × 115 mm/11.1" × 5.1" × 4.5"		FC-610 ID	10° × 8.2°	F1.25	60 mm
Input Voltage	Source	POE (802.3 af)	POE+ (802.3 at)	12 VDC	24 VDC	24 VAC(VA)
	Heater off	<5.5 W	<5.5 W	<5.5 W	<5.5 W	<8 W
	Heater on (@ 100%)	N/A	<25 W	<25 W	<25 W	<32 W
Surge Immunity on AC Power Lines	CE: EN55032 Class A; FCC 47 CFR Part 15, Subpart B, Class A (within CISPR 22:2008 Class A limits)		FC-608 ID	8.6° × 6.6°	F1.1	75 mm
Surge Immunity on Signal Lines	EN 55024: 2010 and 55032: 2010 to 4.0 kV on AC aux power lines; EN 50130-4:2011; IEC 62599-2:2010		Specifications are subject to change without notice. For the most up-to-date specs, go to www.teledyneflir.com			
Cyber Security						
	IEEE 802.1x TLS/HTTPS User Authentication Access Control via Firewall Digest Authentication					

AMERICAS

6769 Hollister Ave.
Goleta, CA 93117

EMEA

Luxemburgstraat 2
2321 Meer
Belgium

APAC

Rm 1613-16, Tower II
Grand Central Plaza
138 Shatin Rural Committee Rd.
Shatin, New Territories
Hong Kong

This product is subject to United States export regulations and may require US authorization prior to export, reexport, or transfer to non-US persons or parties. Diversion contrary to US law is prohibited. For assistance with confirming the Jurisdiction & Classification of Teledyne FLIR, LLC products, please contact exportquestions@flir.com. ©2022 Teledyne FLIR, LLC. All rights reserved.

Revised on 02/01/22
Elara™ FC-Series ID_Datasheet-LTR 20-0858