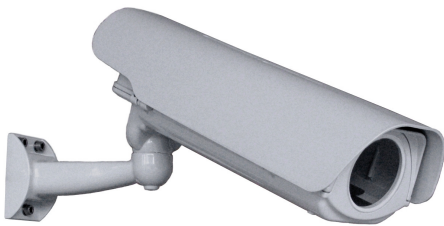




CRONO CPK400 side opening aluminium housing cable managed

- ✓ side opening housing
- ✓ cable managed
- ✓ weatherproof rating IP66
- ✓ version with integrated wiper
- ✓ wall, ceiling, pole, corner mounting
- ✓ made entirely in aluminium
- ✓ easy fastening and positioning
- ✓ wide range of accessories



indoor version



safety lock

Side opening housing cable managed

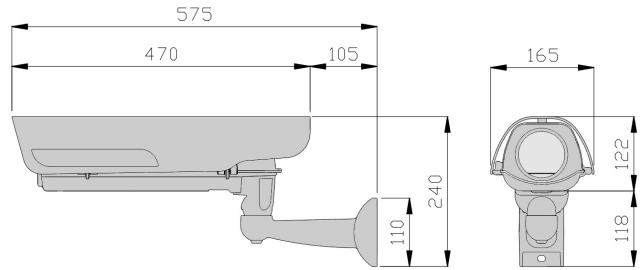
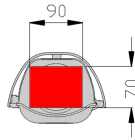
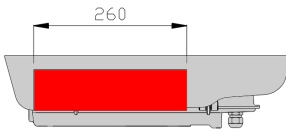
The housing **CRONO CPK400 cable managed** is designed to simplify installation and maintenance of the most popular cameras, including medium-large, analog, IP and megapixel. Inside the housing is possible to install more accessories for any installation requirement: analog, IP, fiber optics (ex. MediaConverter, UMTS router) etc. The die-cast aluminum construction provides high impact resistance and good heat dissipation to the outside while the side opening facilitates accessibility to the camera and connectivity during installation and maintenance. The aluminium cable managed bracket ensures vandal resistance action and meantime good accessibility for installation and maintenance.

Available there are a wide range of accessories: double heating, anticondensing glass, antibreaking glass, alarm-tamper system, camera power supply, ventilation, high efficiency ventilation system for high temperatures, safety-lock system. Suitable for every installations of cameras, megapixel cameras with various lenses.

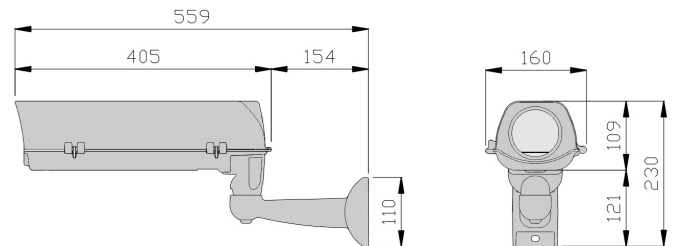
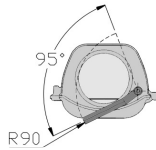
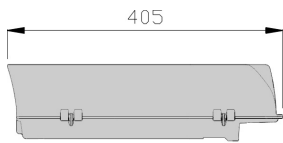
- DATA SHEET -

camera housing

useful area



version with integrated wiper



the values are in millimeters

TECHNICAL DATA

GENERAL

- body made in aluminium
- sunshield in technopolymer UV with wide range of adjustment
- painted with polyester powder RAL 7035 (light grey)
- stainless steel bolts and screws
- side opening housing
- with silica-gel (anticondensing salt) and allen keys for opening
- cable managed
- heater
- wide range of accessories
- supplied with instruction manual
- according to RoHS compliance

ELECTRICAL

- heater: 230V, 110V, 24V, 12V
consumption max. 30W
t on 15°C t off 22°C +/- 3°C
- ventilation: 230V, 110V, 24V, 12V
consumption max. 2W
t on 37°C t off 27°C +/- 3°C
- integrated wiper:
IN 230Vac 5W
IN 24Vac 5W

MECHANICAL

- usable internal space 90x70mm (WxH)
- useful length: 260mm
- glass window Ø 75mm.
- weatherproof rating IP66/67
- weatherproof rating with ventilation extracting system IP44
- indoor/outdoor installations
- operating temperature with heater from -20°C to +60°C
- weight 2,9 Kg. (KIT version)

ACCESSORIES

- VA400** antibreaking glass
- VC400** anticondensing glass
- AL400/A** power supply 230/12Vdc 1,3A
- AL400/B** power supply 230/24Vac 500mA
- AL400/C** power supply 230/12Vdc 2,1A
- RP400** double heater
- VI400** internal ventilation
- VE400** high efficiency external ventilation system
- TP400** alarm-tamper system
- LC400** safety-lock system
- WTP5** water tank 5l. and pump with delivery up to 5m, 11m or 19m (three versions available)
- WTP25** water tank 25l. and pump with delivery up to 5m, 11m or 19m (three versions available)

RELATED PRODUCTS

- STS700** ceiling bracket
- SP/A** pole adaptor
- SA/A** corner adaptor
- PA1** reinforcing support plate
- PA1/SD** reinforcing support plate in weatherproof box

code	unit weight (Kg.)	package dimensions (cm.) WxHxL	package weight (Kg.)
KIT CPK400	2,9	21,0 x 18,8 x 50,0	3,20

Specifications are subject to change without notice, weights and dimensions are indicative.

rev.1014