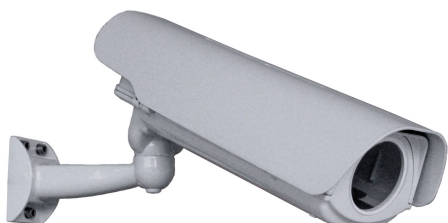




CRONO CPK409 Arctic side opening aluminium housing cable managed indicated for low temperatures

- ✓ side opening housing
- ✓ cable managed
- ✓ weatherproof rating IP66
- ✓ wall, ceiling, pole, corner mounting
- ✓ made entirely in aluminium
- ✓ easy fastening and positioning
- ✓ wide range of accessories



indoor version



safety lock

Side opening housing cable managed

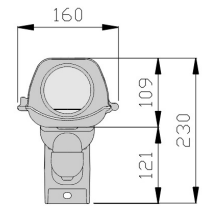
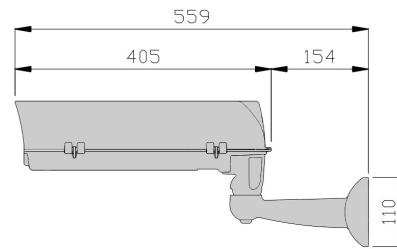
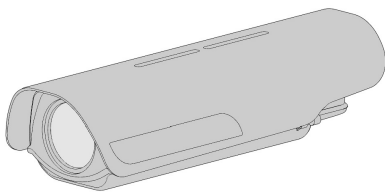
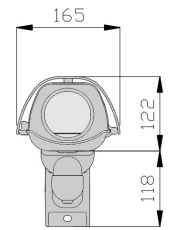
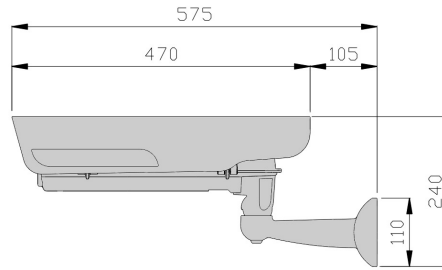
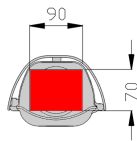
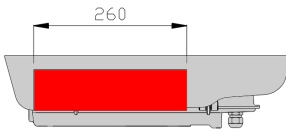
The housing **CRONO CPK409 Arctic** is equipped with a triple heating and adopts materials specially designed to withstand low temperatures (up to -55°C). Inside the housing is possible to install more accessories for any installation requirement: analog, IP, fiber optics (ex. MediaConverter, UMTS router) etc. The die-cast aluminum construction provides high impact resistance while the side opening facilitates accessibility to the camera and connectivity during installation and maintenance. The aluminium cable managed bracket ensures vandal resistance action and meantime good accessibility for installation and maintenance.

Available there are a wide range of accessories: anticondensing glass, antibreaking glass, alarm-tamper system, camera power supply and safety-lock system. Suitable for every installations of cameras, megapixel cameras with various lenses.

- DATA SHEET -

camera housing

useful area



the values are in millimeters

TECHNICAL DATA

GENERAL

- body made in aluminium
- sunshield in technopolymer UV with wide range of adjustment
- painted with polyester powder RAL 7035 (light grey)
- stainless steel bolts and screws
- side opening housing
- with silica-gel (anticondensing salt) and allen keys for opening
- cable managed
- heater
- wide range of accessories
- supplied with instruction manual
- according to RoHS compliance

ELECTRICAL

- heater: 230V, 110V
consumption max. 90W
t on 15°C t off 22°C +/- 3°C

MECHANICAL

- usable internal space 90x70mm (WxH)
- useful length: 260mm
- glass window Ø 75mm.
- weatherproof rating IP66/67
- indoor/outdoor installations
- operating temperature with heater from -55°C to +60°C
- weight 2,9 Kg. (KIT version)

ACCESSORIES

- VA409** antibreaking glass
- VC409** anticondensing glass
- AL409/A** power supply 230/12Vdc 1,3A
- AL409/B** power supply 230/24Vac 500mA
- TP409** alarm-tamper system
- LC409** safety-lock system

RELATED PRODUCTS

- STS700** ceiling bracket
- SP/A** pole adaptor
- SA/A** corner adaptor
- PA1** reinforcing support plate
- PA1/SD** reinforcing support plate in weatherproof box

code	unit weight (Kg.)	package dimensions (cm.) WxHxL	package weight (Kg.)
KIT CPK409	2,9	21,0 x 18,8 x 50,0	3,20

Specifications are subject to change without notice, weights and dimensions are indicative.

rev.2112

GLOBAL PROOF S.r.l.

Via dell'Industria, 10 36013 Piovene Rocchette (VICENZA) ITALY
phone +39.0445.396190 fax +39.0445.395000

info@globalproof.it

www.globalproof.it