

AMGFIB-1V SERIES 1CH VIDEO



Industrial Transmission Solutions

AMG's industrial video converters provide transmission of 1 SD or HD video channel over a single optical fiber.



Singlemode Multimode	Video x1	Temp -40°C~+75°C	Mounting DIN/Surface	PSU x2 Dual	Protection IP40	NDAA/TAA Compliant

[AMGFIB-1V Series]

/ OVERVIEW

Designed in a compact DIN rail or wall mount housing, the AMGFIB series provide digital uncompressed transmission of the latest standard definition and high definition camera signals.

The units support all modern SD & HD video formats including CVBS (PAL, NTSC, SECAM), CVI, TVI & AHD and camera resolutions up to 1960p with SD, HD, 2 megapixel, 3 megapixel, 4 megapixel and 5 megapixel camera types supported from all major brands.

Fitted with dual redundant power inputs supporting both DC and AC low voltage inputs ensures maximum operating reliability and the highest levels of performance.

PSUs need to be ordered separately.

/ FEATURES

- Compact size – ideal for confined spaces, including camera poles and roadside cabinets
- -40°C to +75°C temperature maintains performance in extreme conditions
- Plug & Play – no need for any user configuration
- DIN rail mountable – quick to install and remove for maintenance
- Dual redundant power inputs with DC & AC support
- Supports all the latest SD & HD video formats including CVI, TVI, AHD & CVBS composite
- SD, HD, 2MP, 3MP, 4MP & 5MP cameras supported
- LED indicators provide for easy status of operation
- Designed in the USA & UK. Manufactured in the United Kingdom
- AMG Lifetime Support Warranty

Specifications.

Video.

Video Channels	1
Compression	None, Uncompressed
In/Out Impedance	75Ω (Unbalanced)
Video Input Level	>500mV pk-pk
Video Output Level	1V pk-pk
Bandwidth	30MHz (720p), 60MHz (1080p), 150MHz (1960p)
Video Format	CVBS (PAL/NTSC/SECAM), SD, HD, 2MP, 3MP, 4MP, 5MP
Signal To Noise	>60dB (Weighted 8-Bit)

Optical.

Wavelength	1310nm
Fiber Type	Singlemode or Multimode
No. Of Fibers	1
Fiber Distance:	
Multimode OM2 ¹	1.5Km / 0.9 Miles
Multimode OM3 ¹	2Km / 1.2 Miles
Singlemode ²	20Km / 12.4 Miles
Optical Budget	12dB @ 1310nm

Interface.

LED Indicators	2x Power 1x Optical Link 1x Video Present
Optical Port ³	1x ST or FC Type Connector
Video	1x BNC Connector
Power	1x 4-Way Screw Terminal

Power.

Power Inputs	2
Operating Voltage	9-36V _{DC} or 18-36V _{AC} *
Power Consumption	*AC Available On Power Input 1 Only 3.5W Max
Protection	Reverse Polarity Overload Current

Packaging.

Shipping Weight	0.60kg / 1.32lb
Dimensions:	(W x D x H) 220 × 170 × 40 mm 8.66 × 6.69 × 1.57 in

Mechanical.

Housing	Anodised Aluminium
Dimensions:	(W x D x H) 36 × 88 × 107 mm 1.42 × 3.46 × 4.21 in
(Excluding Wall Brackets)	
IP Rating	IP40
Installation	Wall Mount or DIN-Rail Rack Mount using AMG2034
(Max 10 Units Per AMG2034)	
Weight	0.45kg / 0.99lb

Environmental.

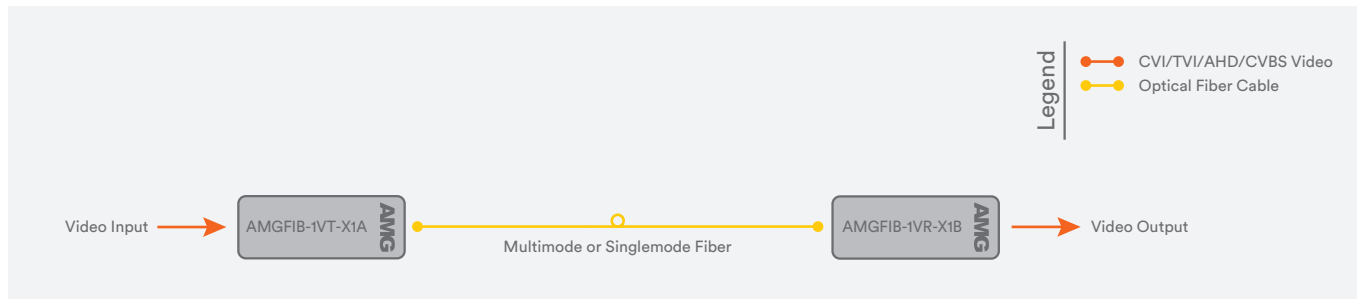
Operating Temp.	-40 to +75°C / -40 to +167°F
Storage Temp.	-40 to +85°C / -40 to +185°F
Humidity	5% to 95% (non-condensing)
MTBF	>250,000 hours
MTBF Standard	Telcordia SR-332 GF 30°C
Heat Dissipation	12 BTU/h
Cooling	Passive Cooling
Noise Level	0 dBA

Regulatory.

Safety	IEC/EN 62368-1
EMI	EN 55032 Class A CISPR 32 FCC Part 15B Class A
EMS	EN 61000-4-2 (ESD) EN 61000-4-3 (RS) EN 61000-4-4 (EFT) EN 61000-4-5 (Surge) EN 61000-4-6 (CS) EN 61000-4-8 (PFMF)
Shock	IEC 60068-2-27
Free Fall	IEC 60068-2-32
Vibration	IEC 60068-2-6
Environmental	Reach RoHS WEEE
Supply Chain	NDAA & TAA Compliant

Designed to meet NEMA TS2 & EN 50121-4

Application Diagram.



Part Numbers.

Industrial 1Ch CVI/TVI/AHD/CVBS Video

AMGFIB-1VT-M1A	1x CVI/TVI/AHD/CVBS Video Tx, Multimode 1 Fiber ST Port A Type
AMGFIB-1VR-M1B	1x CVI/TVI/AHD/CVBS Video Rx, Multimode 1 Fiber ST Port B Type
AMGFIB-1VT-S1A	1x CVI/TVI/AHD/CVBS Video Tx, Singlemode 1 Fiber ST Port A Type
AMGFIB-1VR-S1B	1x CVI/TVI/AHD/CVBS Video Rx, Singlemode 1 Fiber ST Port B Type

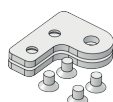
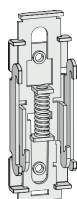
¹ Multimode fiber distance may be limited by the optical cable bandwidth. High bandwidth 50/125µ OM3 or higher fiber is recommended to achieve the maximum distance. For further information and support please contact the AMG Systems Technical Services team.

² Singlemode units are available with longer distance optics as an option. For availability please contact your local AMG Systems sales representative.

³ ST type optical connectors are fitted as standard. FC/PC type connectors are available on request. Add /FC at the end of the part code. Additional lead times will apply as /FC models are manufactured to order only.

Included Accessories.

DIN Rail Adapter Rear Mounted Metal DIN Rail Clip & Screws For DIN Rail Mounting AMGFIB Series Products
 Wall Mounting Brackets 2x Wall Mounting Brackets & Screws For Wall / Surface Mounting AMGFIB Series Products



Recommended PSUs.


AMGPSU-W12-P25 Plug Top Mounting Lite Industrial Grade PSU, 0 to +70°C, 12VDC, 25W, UK/EU/US Plug Heads Included
 AMGPSU-I12-P24 DIN-Rail Mounting Industrial Grade PSU, -40 to +70°C, 12VDC, 24W

Optional Accessories.

AMG2034 Series Industrial Retractable Rack Chassis For AMG DIN Rail Units, 4U 19inch Rack Mount, -40 to +70°C, Integrated Cable Management & Optional Single Or Dual Redundant Integrated Power Supplies
 AMG2035 Side Mounted Wall Bracket Adapter Kit For DIN Rail Mounting AMGFIB Series Products In Depth Restricted Installations. Adapter Kit Can Be Extended Using The Included Extension Kit To Also Mount A DIN Rail Power Supply.

In a continuing effort to improve and advance technology, product specifications are subject to change without notice. Please visit www.amgsystems.com for the latest product specifications.

AMG Systems Ltd. 4 Pioneer Way, Castleford, WF10 5QU, UK T: +44 (0) 1767 600 777 E: sales@amgsystems.com
 AMG Systems Inc. 62 Spring Hill Road, Trumbull, CT 06611, USA T: +1-855-AMGPOE1 (855-264-7631) E: sales@amgsystems.com
 D31077-02 amgsystems.com

Proud to be a British
 Manufacturer 

AMG